

INSTALLATION INSTRUCTIONS

Rev. 1

MODEL NO. 88041

Hardware Kit #112662

APPLICATION:

2006-08 Toyota RAV4

WARNING

Although this hitch is designed to safely tow its rated load, we recommend that you consult your vehicle owner's manual for possible manufacturer's recommendations or limitations. Always follow the manufacturer's installation instructions and always install on the specified vehicle. Before installing hitch, check that the attachment points are in good condition.

Failure to follow these guidelines will void warranty. Any modifications to this hitch will void warranty.

CLASS III

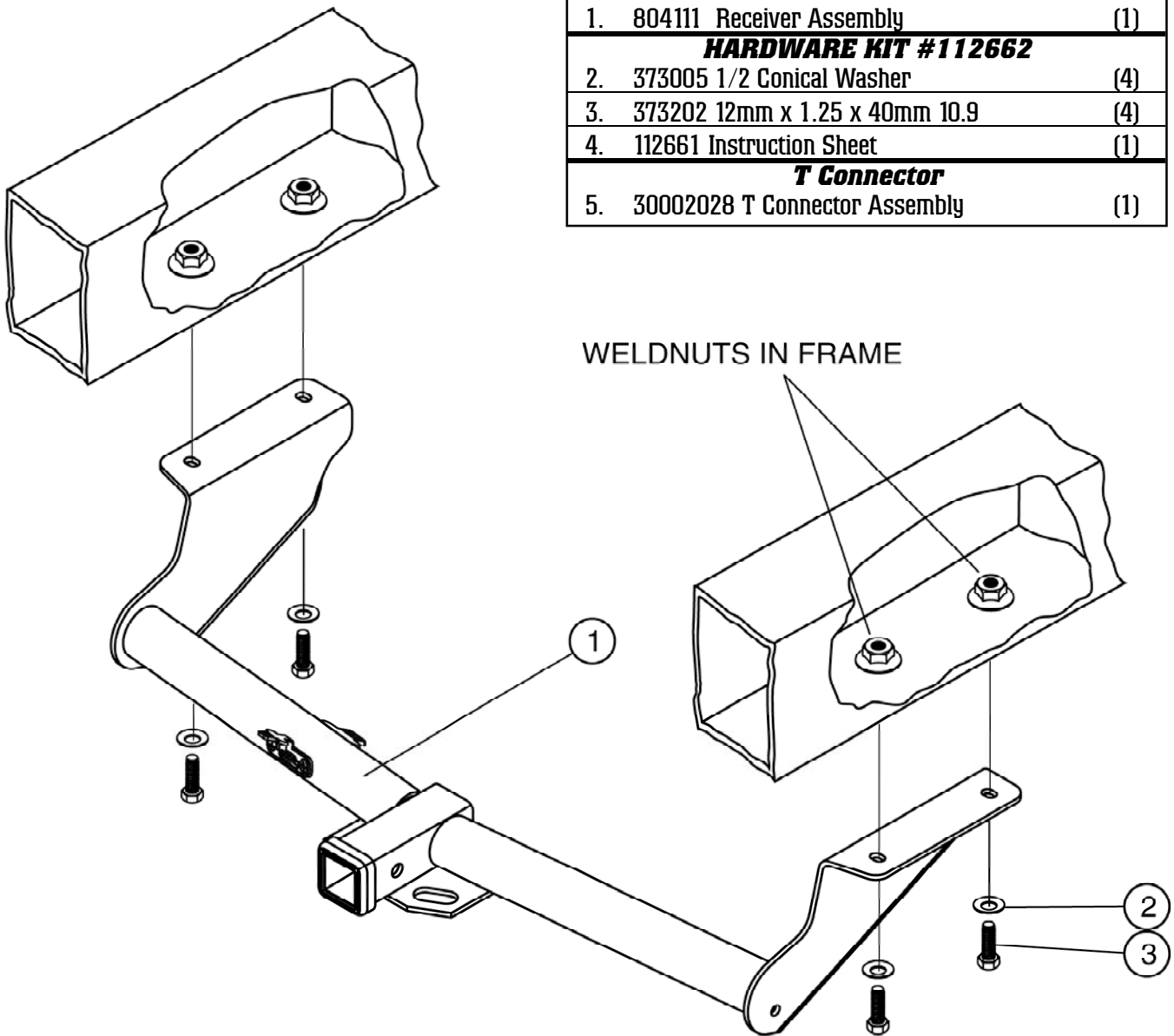
WEIGHT CARRYING HITCH CAPACITY

**4000 LBS. MAXIMUM TRAILER WEIGHT
400 LBS. MAXIMUM TONGUE WEIGHT**

Trailer brakes are recommended for towing loads in excess of 1500 lbs.

COMPLETE PARTS LIST

Part	Description	Quantity
1.	804111 Receiver Assembly	(1)
<u>HARDWARE KIT #112662</u>		
2.	373005 1/2 Conical Washer	(4)
3.	373202 12mm x 1.25 x 40mm 10.9	(4)
4.	112661 Instruction Sheet	(1)
<u>T Connector</u>		
5.	30002028 T Connector Assembly	(1)



1. ***Read instructions thoroughly before beginning.***

2. Open the vehicles tailgate. There will be an electrical access panel on both the left (driver's) and right (passenger) side interior panels near the tailgate opening (Fig. 1). Open these access panels to locate the vehicle's tail light wiring.

3. Remove the tailgate threshold. Carefully pull back the rear interior trim panels on each side.

4. Locate and remove the black grommet in the left (Driver's) side access panel opening (Fig. 2). From underneath the vehicle, push both sets of Hitch Wiring Harness ends through the grommet and into the vehicle.

Note: The Hitch Wiring Harness' black box and 4-flat mating connector will remain outside of the vehicle.

5. From the left (driver's) side access panel opening, locate the vehicle wiring harness connectors near the back side of the tail light assembly. They will be similar in design to those on the Hitch Wiring Harness (Fig. 3).

6. Separate the grey harness connectors, taking care not to damage the locking tabs. Insert the Hitch Wiring Harness ends containing the yellow wires between these separated ends, ensuring that the locking tabs engage.

7. Route the remainder of the Hitch Wiring Harness with the Green wires out from behind the trim panel to the right (passenger) side of the vehicle, tucking the green wire under the threshold.

8. Find and separate the grey harness connectors located behind the right (passenger's) side, tail light assembly. Take care not to damage the locking tabs. Insert the Hitch Wiring Harness ends containing the Green wires between the ends separated in step 3, ensuring that the locking tabs engage.

9. Returning to the left (drivers) side, locate a clean accessible mounting location under the vehicle near the wiring harness ends within reach of the white wire and grounding eyelet and drill a 7/64" hole.

Caution: Take care not to drill through the body or any exposed surface.

10. Mount the white wire using the ground screw and eyelet provided.

11. Route the long 12 gauge black wire (provided) from the battery compartment either under the vehicle along the left (driver's) side frame to a position near the Hitch Wiring Harness' black box as illustrated (Fig. 4). Secure the wire to the vehicle frame using cable ties (included).

Caution: When routing wire through metal or other sharp surfaces, always utilize an existing grommet, provide a grommet or insulate the wire from the hole with silicone rubber.

12. Disconnect the vehicle's Negative (-) battery cable.

13. Connect the end of the fuse holder to the black 12 Ga. wire using the yellow butt connector provided. Strip 5/16" of insulation from the end of the black wire before connecting.

14. With the fuse removed, attach the 3/8" ring terminal to the vehicles positive (+) battery terminal (Fig. 5).

Warning: Do not attempt to connect the black power wire to the vehicle fuse panel or any other accessory wiring. Failure to connect directly to the vehicle battery could cause vehicle damage and/or trailer lighting failure.

15. At the rear of the vehicle, Strip 5/16" of insulation from the black 12 Ga. wire and connect it to the black wire on the black box using the butt connector provided.

16. Reattach the vehicles Negative (-) battery wire.

17. Place the 7.5 amp fuse into the fuse holder installed in step 12.



Fig. 1



Fig. 2

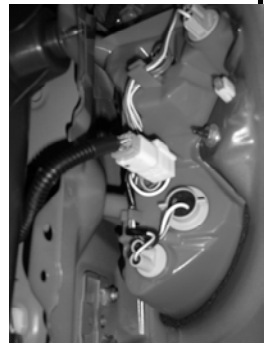


Fig. 3



Fig. 4



Fig. 5

18. Using a utility knife carefully slit the grommet from step 3, as indicated (Fig. 6) making a small circle in the center of the grommet and an outward cut from the center to the outside edge.
19. Wrap the grommet around the Hitch Wiring Harness. Replace the grommet into the vehicle, securing the Hitch Wiring Harness into place. Mount the black box to clean surface on the under side of the vehicle using foam tape or cable ties (supplied)

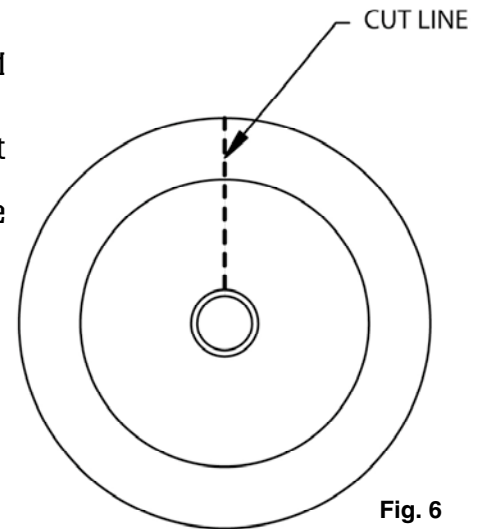


Fig. 6

Hitch Installation

1. Remove the factory tie down bracket from bottom of left rear frame section. Discard tie down bracket and two fasteners.
2. Position receiver assembly up against bottom of left and right vehicle frame in line with the existing weldnuts in frame.
3. Bolt receiver frame brackets to vehicle frame with the 40mm bolts #3 and 1/2" conical washers #2 as illustrated.
4. Tighten all 12mm bolts to 75 ft. lbs. torque. Failure to tighten bolts as described may result in fastener loss or failure.
5. Plug the remaining connector of the installed harness into the mating connector on the inward side of the hitch once installed. Press the connectors firmly together, ensuring that the locking tabs engage.
6. Confirm correct operation of the 4-Flat connector by using a test light or a properly equipped trailer.
7. Secure any loose wires under the vehicle using cable ties. Return all access panels, trays and thresholds to their original positions.

WARNING: Use only a 5/8" diameter hitch pin with locking device to secure a ball mount in this receiver.

WARNING: Be sure to check the hitch pin and hair pin for positive locking placement before towing trailer.

NOTE: Some states require a clear view of license plates. Remove trailer ball and/or ball mount when not in use if it restricts view.

For information regarding the installation of this product, go to: www.towingsupport.com
or Email us at: tech@towingsupport.com or Call our Technical Support Team at: 1-800-344-3230

This product complies with regulation V-5, C.S.A Standard D-264 and safety requirements for connecting devices
and towing systems of the State of New York