

INSTALLATION INSTRUCTIONS

Rev. 3

MODEL NO. 88012

Hardware Kit #112553

APPLICATION: 2002-07 Saturn Vue (Excl. Redline model)

WARNING

Although this hitch is designed to safely tow its rated load, we recommend that you consult your vehicle owner's manual for possible manufacturer's recommendations or limitations. Always follow the manufacturer's installation instructions and always install on the specified vehicle. Before installing hitch, check that the attachment points are in good condition.

Failure to follow these guidelines will void warranty. Any modifications to this hitch will void warranty.

CLASS II

WEIGHT CARRYING HITCH CAPACITY

**3,500 LBS. MAXIMUM TRAILER WEIGHT
350 LBS. MAXIMUM TONGUE WEIGHT**

Trailer brakes are recommended for towing loads in excess of 1500 lbs.

WARNING: If this hitch is used with any auxiliary load carrying product, such as bicycle or cargo carriers, the loaded weight must not exceed 200 lbs. including the weight of the carrier. The loaded carrier weight with the extended leverage may damage hitch and/or attachment points on vehicle.

COMPLETE PARTS LIST

Part	Description	Quantity
1.	801111 Receiver Assembly	(1)
<u>HARDWARE KIT #112553</u>		
2.	297503 12mm x 1.75 x 45mm Hex Cap Screw	(6)
3.	286602 1/2-13 x 2 Carriage Bolt Gr. 5	(2)
4.	182604 1/2" Spacer	(2)
5.	373005 1/2" Conical Toothed Washer Type H	(6)
6.	186203 1/2 - 13 Hex Nut	(2)
7.	489207 Pull Wire	(1)
8.	112554 Instruction Sheet	(1)
<u>T CONNECTOR</u>		
9.	30002029 T Connector Assembly	(1)

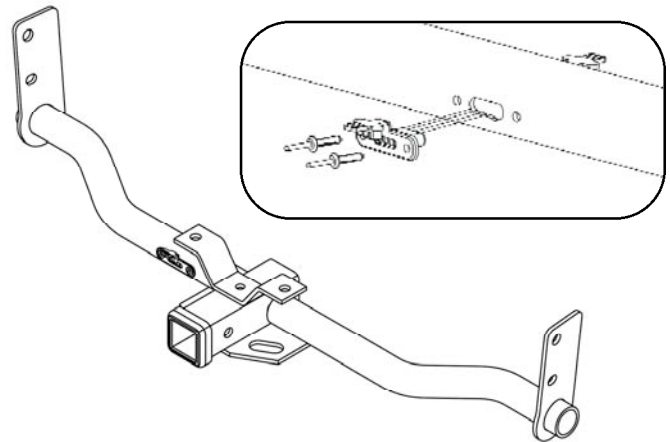


FIG. 1

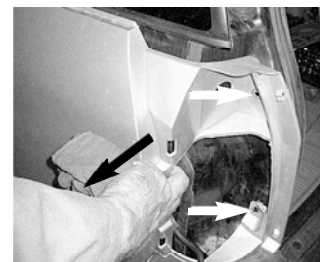


FIG. 2

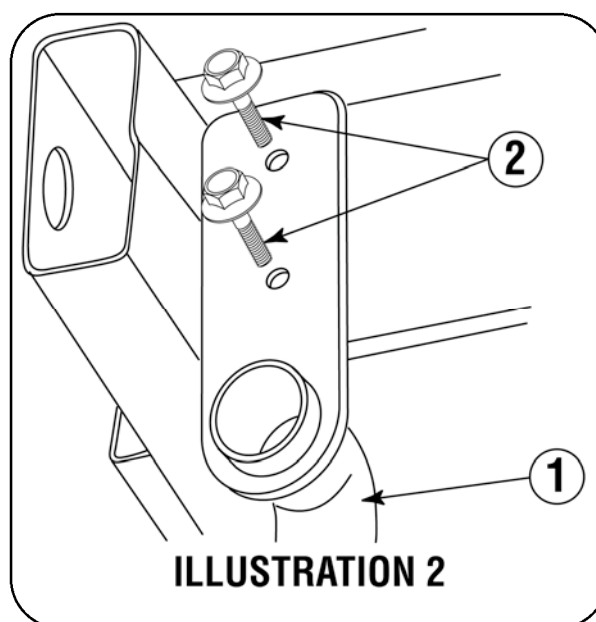
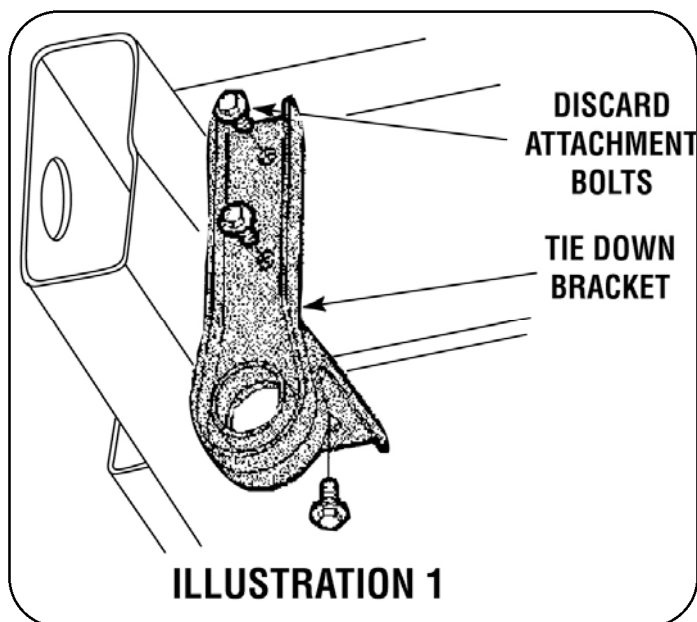
1. **Read instructions thoroughly before beginning.**
2. Open the vehicle's tailgate and using a Torx-15 driver, remove two fasteners from both the left (driver's) and right (passenger) side tail light assemblies (Fig. 1). Carefully pull the tail light assembly away from the vehicle, taking care not to damage the alignment pins.
3. Locate the tail light assembly connectors within the tail light openings. Carefully disconnect each connector by pressing on the locking tabs and pulling apart.
4. Locate and remove the two 10mm nuts within the left (driver's) side tail light opening (Fig. 2). Carefully pull the quarter panel slightly away from the vehicle to allow clearance for the harness and black box.
5. Partially remove both wheel well liners and mud guards to expose a path to the area behind.
6. Beginning on the left (driver's) side, route the harness ends with the Green wires and the 4-Flat trailer connector into the tail light opening and out through the opening in the wheel well to the underside of the vehicle.
7. From underneath the vehicle, continue routing the harness ends with the Green wire rearward to the bumper fascia, along the fascia to the right (passenger) side, up through the opening in the wheel well and into the right side tail light opening.

Caution: When routing, take care to avoid hot pipes, heat shields, the fuel tank and any sharp surfaces or moving parts.

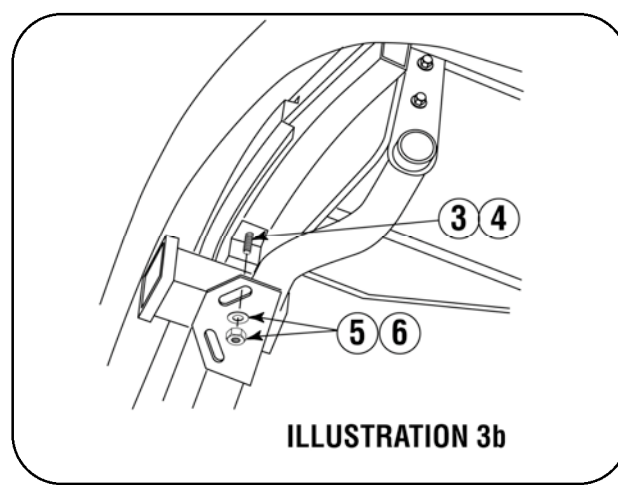
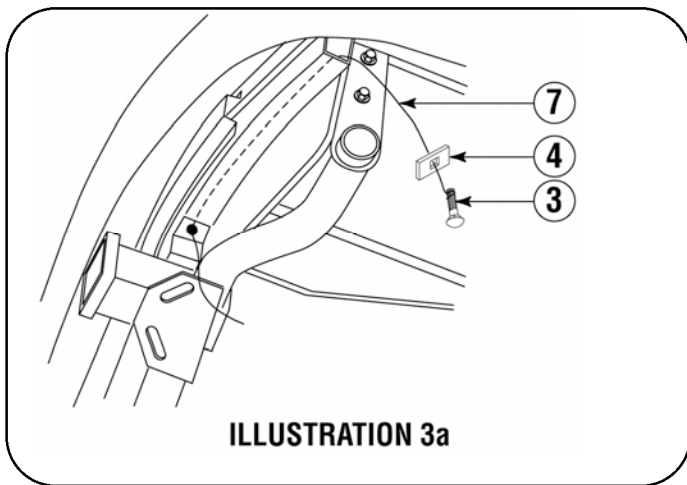
8. From underneath the vehicle, route the 4-Flat trailer connector to the center of the vehicle.
9. Position the harness ends with the Green wires between the right (passenger) side tail light assembly and it's mating vehicle connector. Press the connectors firmly together to ensure the locking tabs engage.
10. Within the left (driver's) side tail light opening, locate a clean accessible mounting location on the vehicle near the harnesses black box within reach of the white wire and grounding eyelet. Drill a 7/64" hole.
Caution: Take care not to drill through the body or any exposed surface.
11. Mount the white wire using the ground screw and eyelet provided.
12. Mount the harness's black box within the left tail light opening, using form tape or a cable tie.
Note: Ensure there is adequate clearance for the tail light assembly before permanently mounting the black box.
13. Return the left (driver's) side quarter panel to its original position and replace the 10mm nuts removed in step 4.
14. Plug the harness ends with the Yellow wires into the left (driver's) side tail light assembly and it's mating vehicle connector, pressing hard to ensure the locking tabs engage.

HITCH INSTALLATION

1. Remove the tie down brackets from end of each vehicle frame, if so equipped. See Illustration 1. Brackets are secured with three bolts. Discard these bolts and brackets.



2. Position hitch assembly up against side of vehicle frame and bottom of vehicle bumper. Bolt hitch frame brackets to side of frame using 12mm x 1.75 x 45mm Hex Cap Screw #2 as shown on Illustration 2.
3. The pull wire #7 must be used to reach the yoke attachment holes near the center of this bumper beam to install fasteners at center attachment points. Insert the pull wire into the yoke attachment hole in the bumper beam and push it out the end of the bumper beam near the hitch frame bracket.
- 3a. Assemble a 1/2-13 x 2 Carriage Bolt Gr. 5 #3 and 1/2" Spacer #4 with the pull wire #7 and carefully pull the fastener into the bumper beam so that the bolt will extend out through the hole in the beam and the yoke on the hitch assembly. See Illustration 3a. Loosely secure yoke in place with 1/2 - 13 Hex Nut #6 and 1/2" Conical Toothed Washer Type H #5. Repeat procedure on other side of hitch assembly.
- 3b The bumper skin must be trimmed in center to allow hitch assembly to mount to yoke attachment holes.
4. Tighten all 12mm bolts to 75 ft. lbs. torque.



5. Plug the remaining connector of the installed harness into the mating connector on the inward side of the hitch once installed. Press the connectors firmly together, ensuring that the locking tabs engage.
6. Return all wheel well liners, mud flaps, tail light assemblies and any other items removed to their original positions, taking care not to pinch or damage any wires.
7. Confirm correct operation of the 4-Flat connector by using a test light or a properly equipped trailer.
8. Secure any loose wires under the vehicle using cable ties.

WARNING: Use this hitch only as a weight carrying hitch.

DO NOT use with any type of weight distributing hitch.

WARNING: Be sure to check the hitch pin and hair pin for positive locking placement before towing trailer.

NOTE: Some states require a clear view of license plates. Remove trailer ball and/or ball mount when not in use if it restricts view.

For information regarding the installation of this product, go to: www.towingsupport.com
or Email us at: tech@towingsupport.com or Call our Technical Support Team at: 1-800-344-3230

This product complies with regulation V-5, C.S.A Standard D-264 and safety requirements for connecting devices and towing systems of the State of New York